



SHOWTIME v1.1

for the **NOKIA N900**

Brought to you by www.passiongarage.co.uk

Maemo.org id : [krk969](#)

Email : rkmaemo@gmx.com

What is this ?

A global TV channel list viewer with calendar reminder integration.

This app downloads xmltv data depending on the region selected and displays the tv channel listings , in most cases for an entire week. The user can then view details of the programme and select them to be added to his calendar.

The app can also send the messages to perform remote recording of selected programmes, but currently this is limited to the UK region. Although it can be added to any region if information about such a service is available.

Special Mention: Thanks to all XMLTV data source providers who have taken the pains to maintain the XMLTV data for their regions.

If you want to generate your own XMLTV data its pretty easy or if you just want to have some general knowledge you could refer to

<http://wiki.xmltv.org/index.php/XMLTVProject>

Countries/Regions Supported in v1.1

COUNTRY CODE	NAME	DATA FILES
UK	United Kingdom	Single File
AU	Australia	Per Day File
NZ	New Zealand	Per Day File
DE	Germany	Single File
FR	France	Single File
IT	Italy	Single File
ES	Spain	Single File
DK	Denmark	Single File
NL	Netherlands	Single File
NO	Norway	Per Day File
SE	Sweden	Per Day File

Countries/Regions (contd...)

COUNTRY CODE	NAME	DATA FILES
FI	Finland	Single File
BE	Belgium	Single File
PL	Poland	Single File
HR	Croatia	Per Day File
SI	Slovenia	Per Day File
MY	Malaysia	Single File
RU	Russia	Single File
ZA	South Africa	Single File

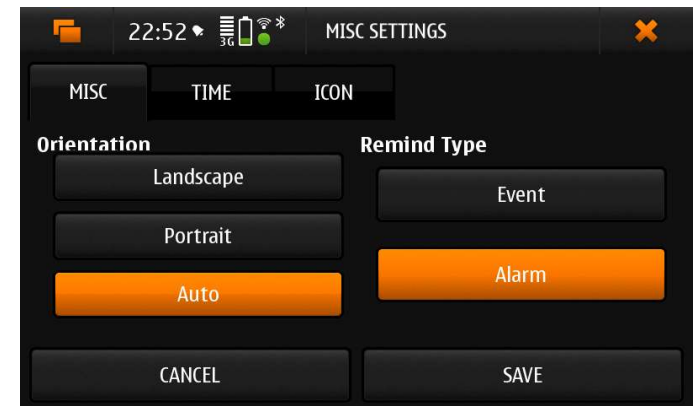
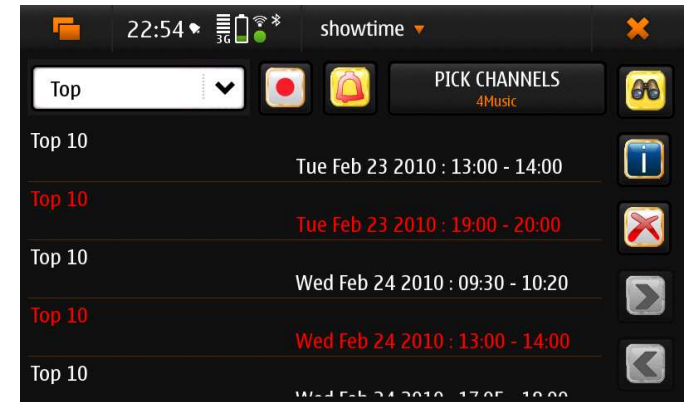
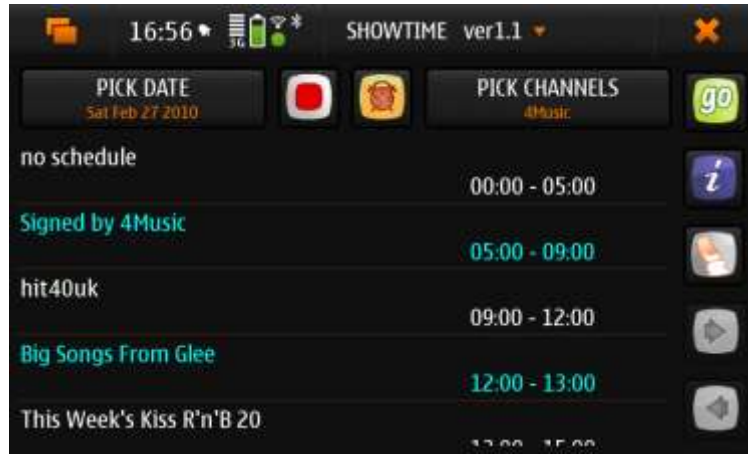
**Single File XMLTV files generally have data for about 5-7 days for a channel. This varies of course for channels/regions.*

Main Highlights

V1.1 supports

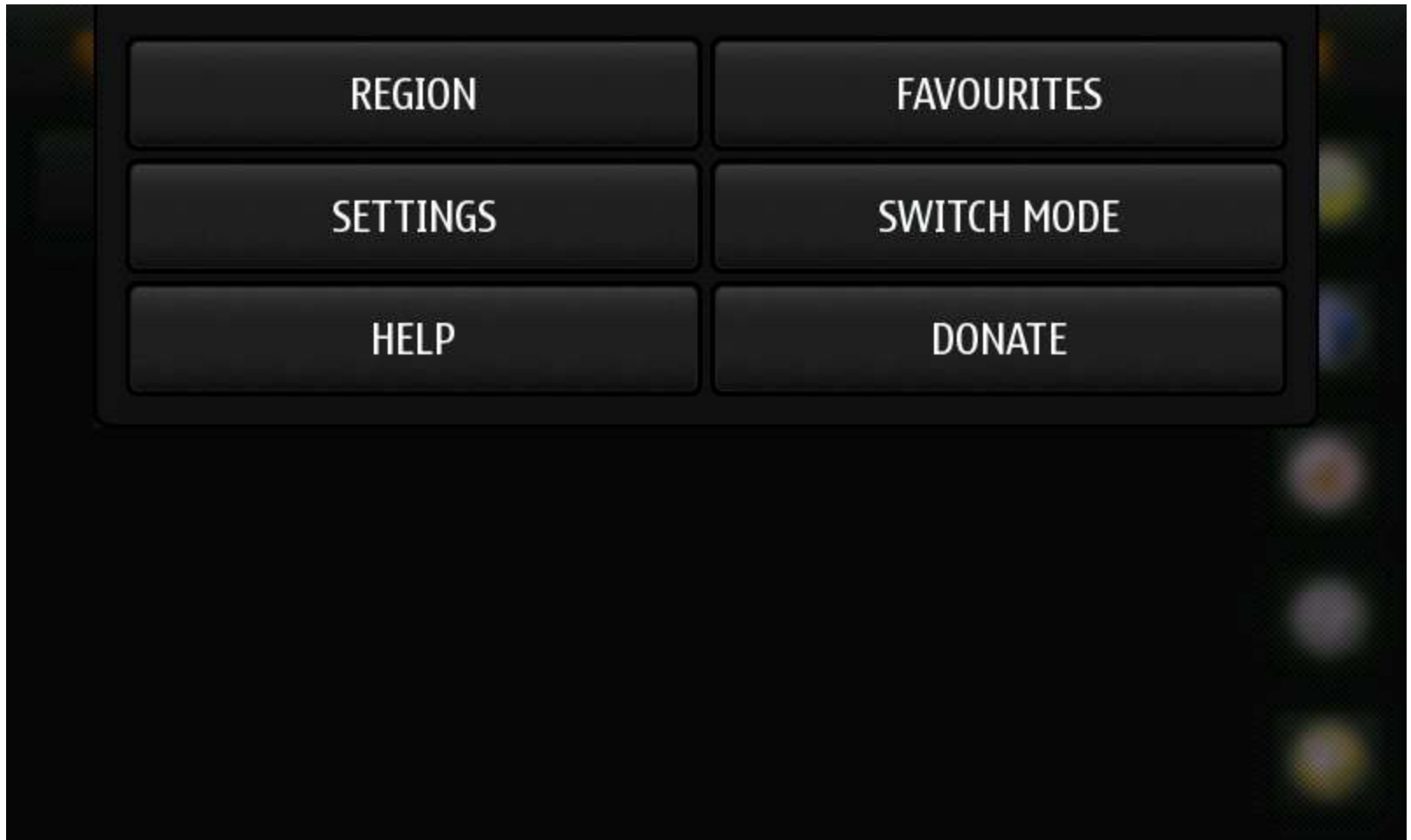
- Switch country/region dynamically
- Set calendar reminders/send remote record*(UK only) for selected programmes.
- Search for your favourite programmes.
- Save favourite channels/programme titles.
- Portrait mode available.
- Caches downloaded files locally and deletes them when they are a couple of days old.
- All settings are stored locally so its reloaded when app starts.
- If an XMLTV link for any country can be provided, its very trivial to add it to the app.
- Prime time setting.
- Show/Hide past listings.
- Select from 4 different icon sets.

Random Screenshots



STEP 1 :

Click on the title to bring up the menu. Then click on REGION to select your region.



STEP 2 :

Click on region you want to see the data for.

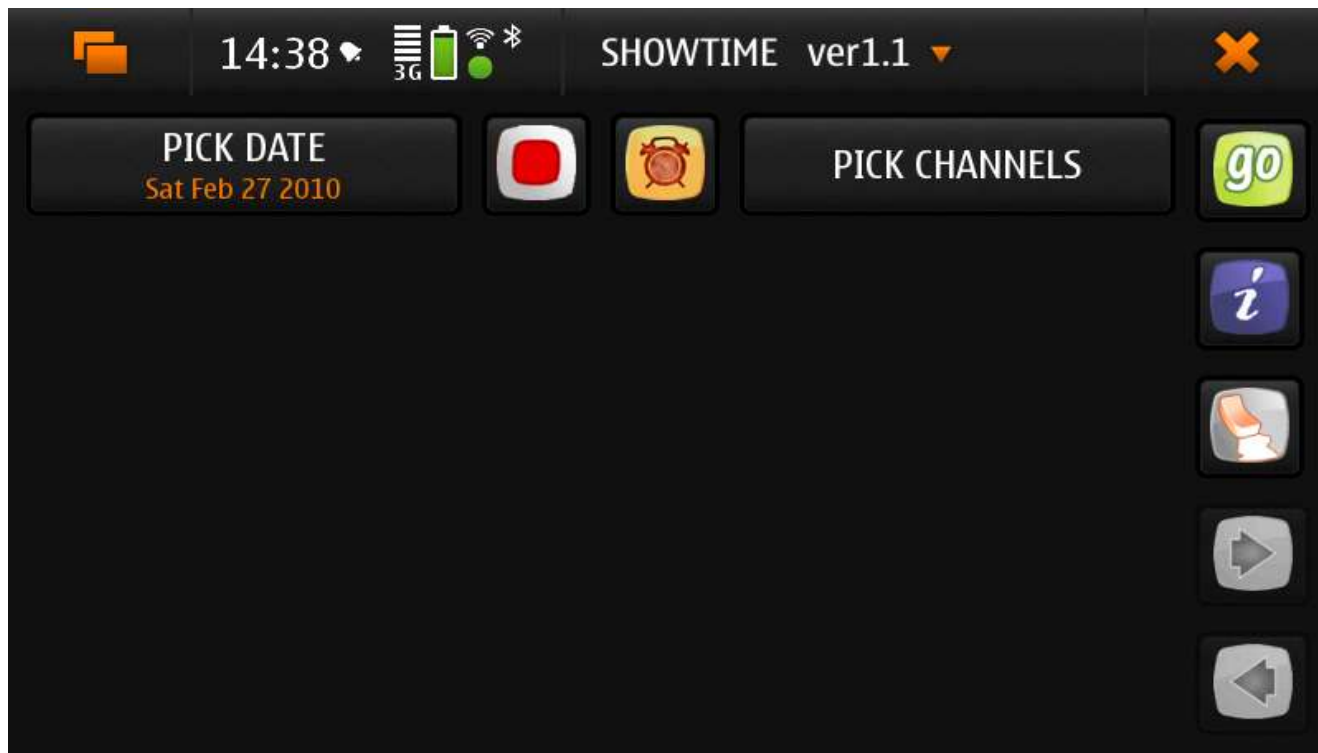


STEP 3:

Click on the PICK CHANNELS to bring up the channel list. Then click on channel you want.

This will be added to the list of selected channels in memory.

NOTE:: You can select as many channels you want and they will be added to the list of selected channels in memory.



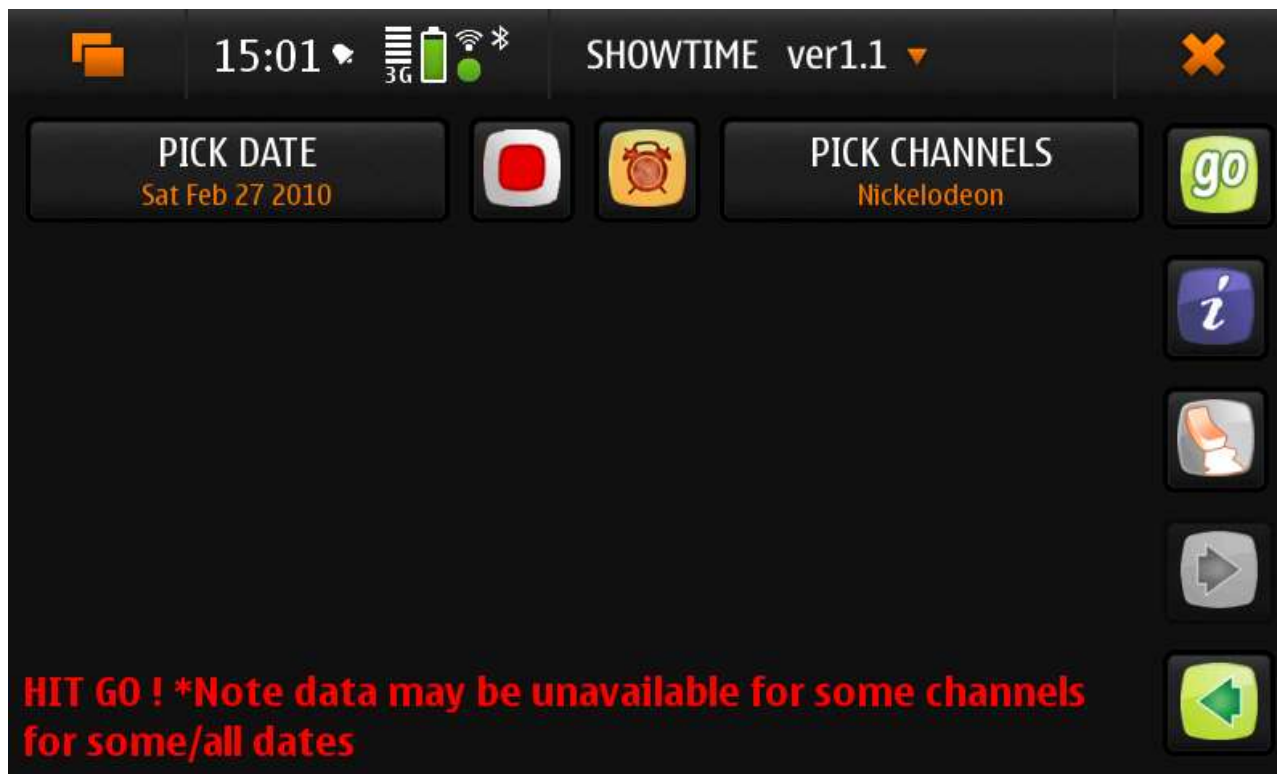
STEP 4:

Click on the PICK DATE to bring up the date list. Then click on date you want to see data for.

NOTE::All dates will appear in RED as there is no data in memory currently.

Once you have selected the date hit the **GO** button.

This will download(*if data is not present on the phone*) and read the XMLTV data for the **current channel** shown.



STEP 5a:

If data is present its displayed as a list below.

You can use the arrow buttons to shuttle between your selected channels for the date that is selected.

Note:: You need to hit go on each of them to load data into memory.

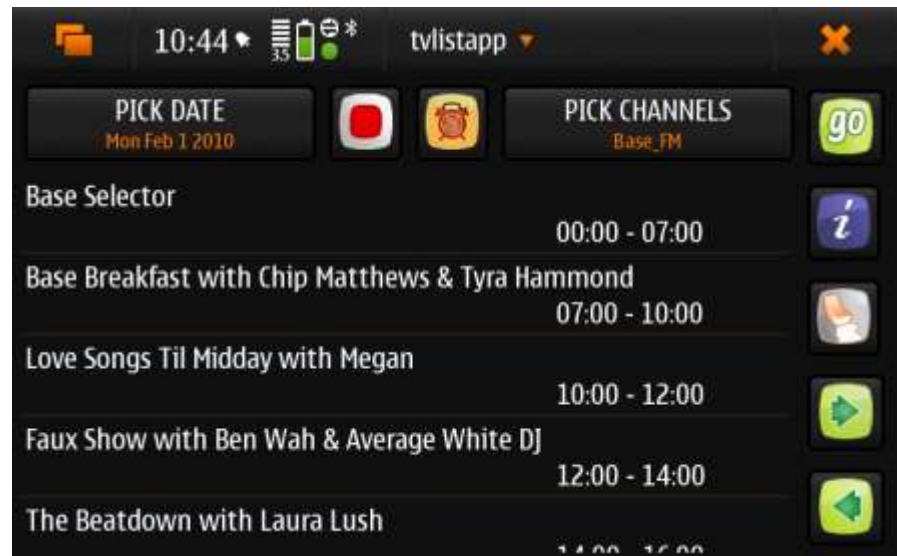
Select the programme(s) you want .

The **info (i) button** will show the details of the programme.

The **record* button** will send a message to remote record the programme(s).

The **remind button** adds an event/alarm to your calendar for each programme.

The **clear button** below the info button will clear all data in memory.



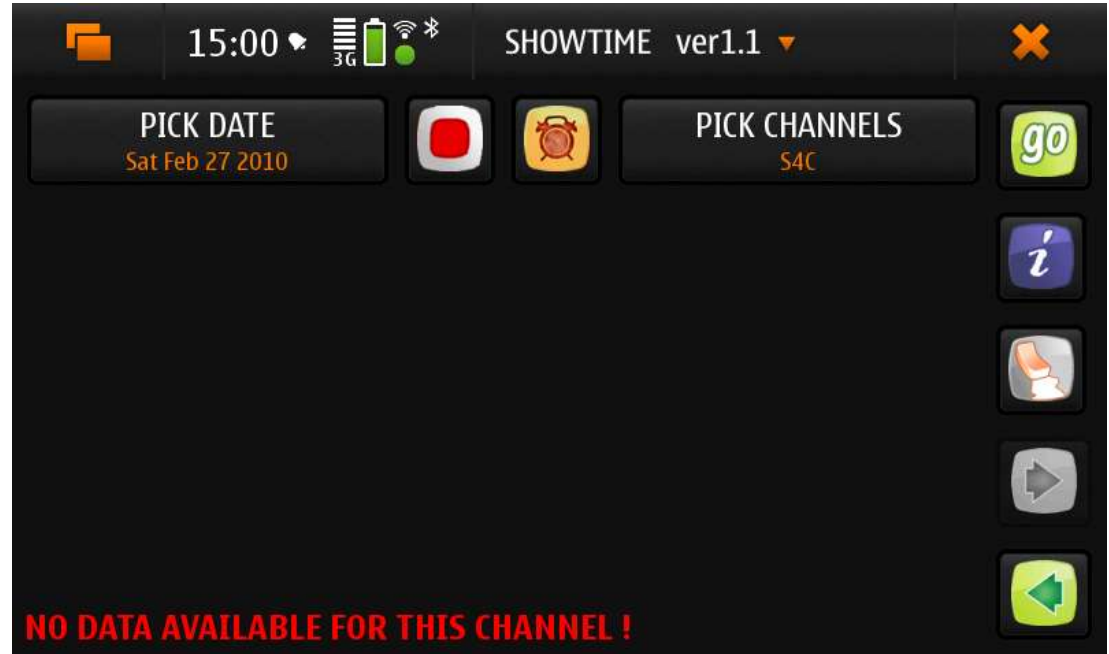
*remote record will work only in UK as of now. But its trivial to add it for any country if somebody can tell me how it works there.

STEP 5b:

If data is not present (i.e your source does not have the data) you see something like this below.

In this case you can either

- choose another channel or use the arrow button to go to the next selected channel(in case you had selected multiple) and then Hit GO again to get data for that .
- Click on PICK DATE and see if there are any **green dates*** for the channel and see the data for that.

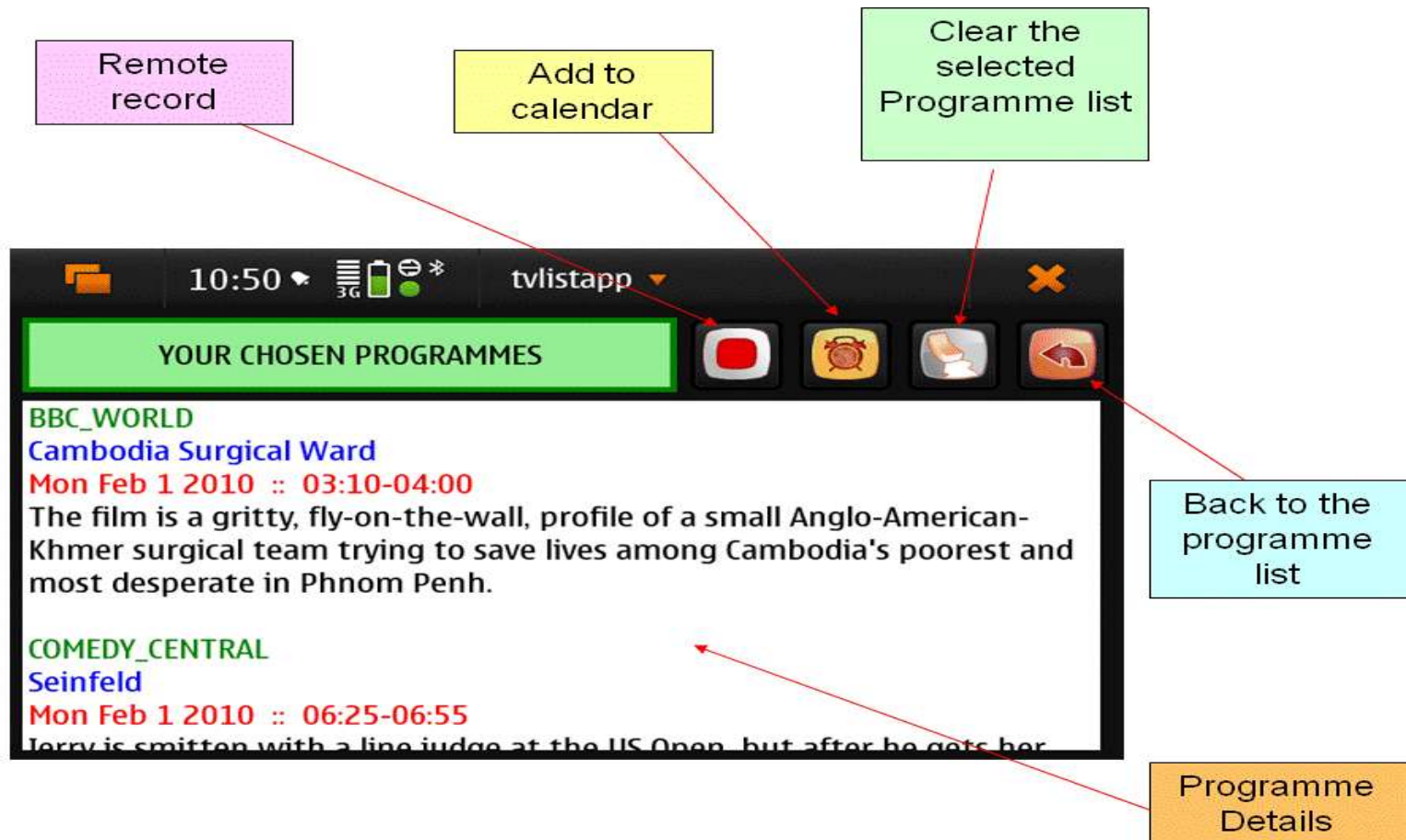


* Dates get coloured as green if data is available for the channel, else they show up as red.

Programme Detail Window

You get here by clicking the Info Button (i) on the programme list screen. Here you will see the details of your selected programme.

NOTE::Hitting the clear Button here will NOT remove your selected channel list, it will only clear the programme list.



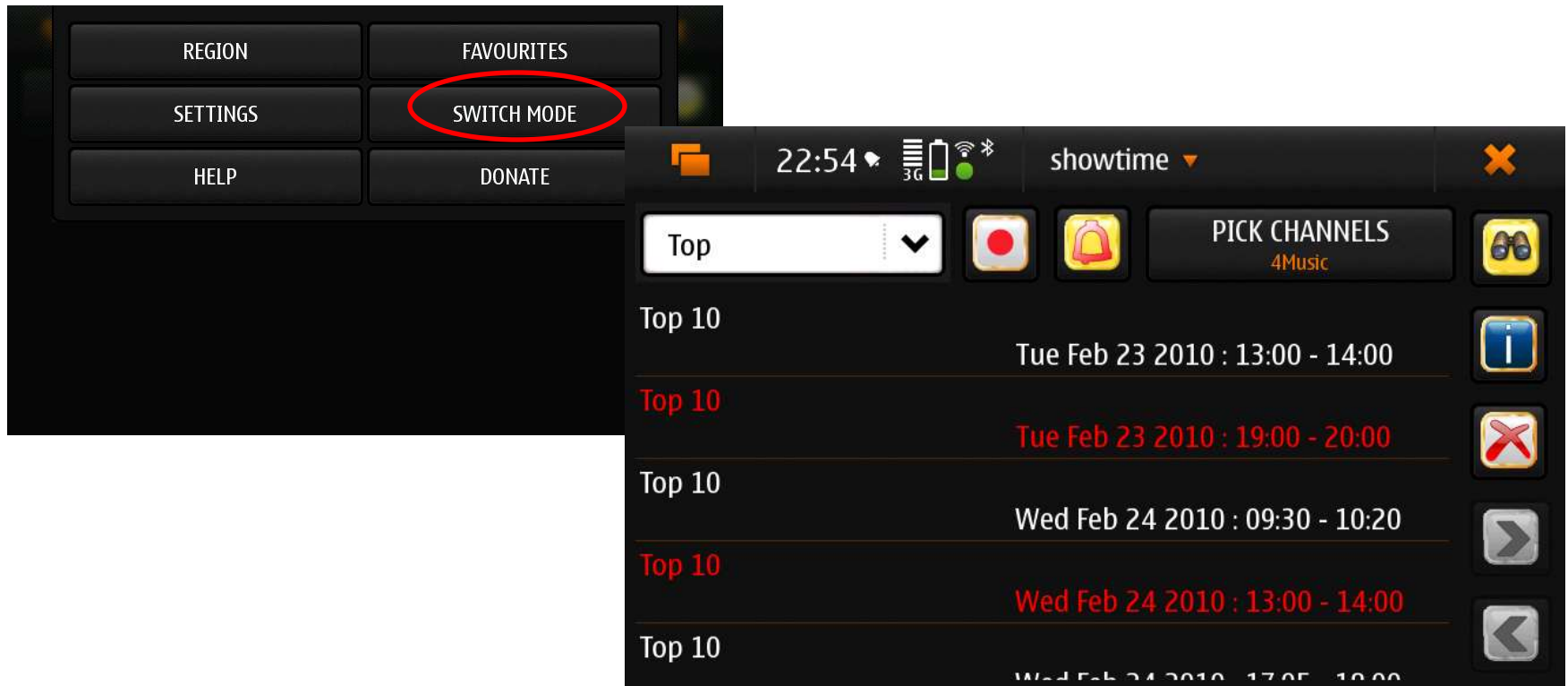
Search Mode

Click on the title menu, and hit the **SWITCH MODE** button.
This button allows you to toggle between search and list modes.

In the list mode, you can use the drop down of the input bar to select from your favourite search strings for the channel or enter a new one.

Note::you can concatenate multiple search strings with a +.

Just make sure your search string has no + 😊

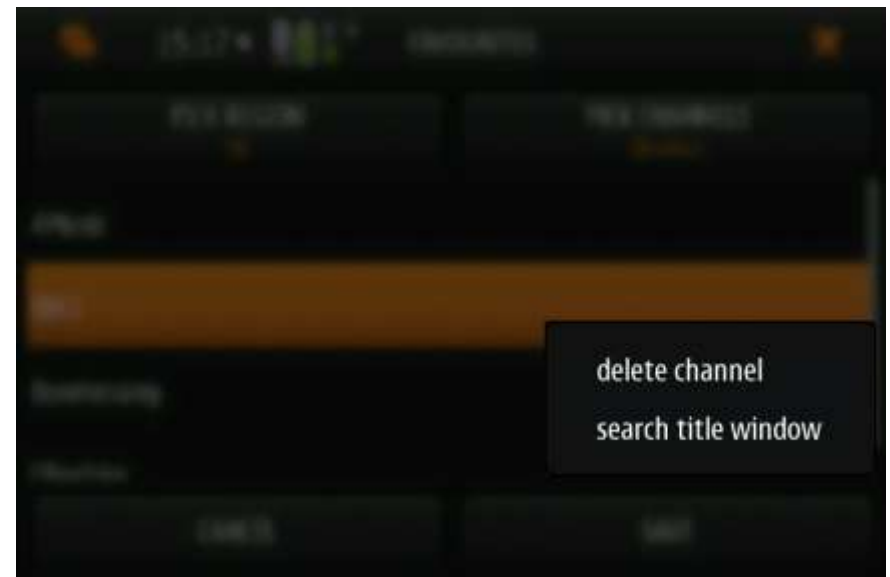


Favourite Settings

Here you can select your favourite channels for any region by clicking the drop down buttons. By default your selected region is shown.

If you click on any existing favourite channel it will bring up the context menu as shown in the second screenshot.

Search title window will take you to a new window where you can set your favourite search strings for that channel.



Favourite Search Titles

In the input box type any search string you want and press enter.
This will be added to the list of favourite search strings for the selected channel.

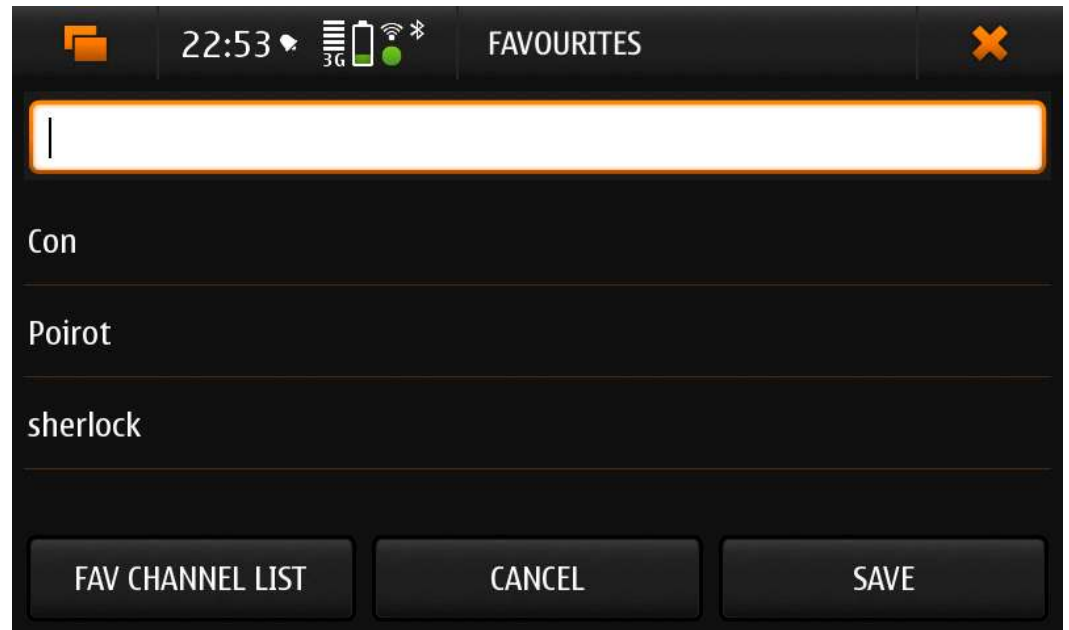
You can use the '+' with a space to concatenate multiple search strings.

Example: Top + Hits

This will search for either Top or Hits.

Note::search strings are not case sensitive and avoid using + in your search

😊, its used only to concatenate



FAVOURITES

Con

Poirot

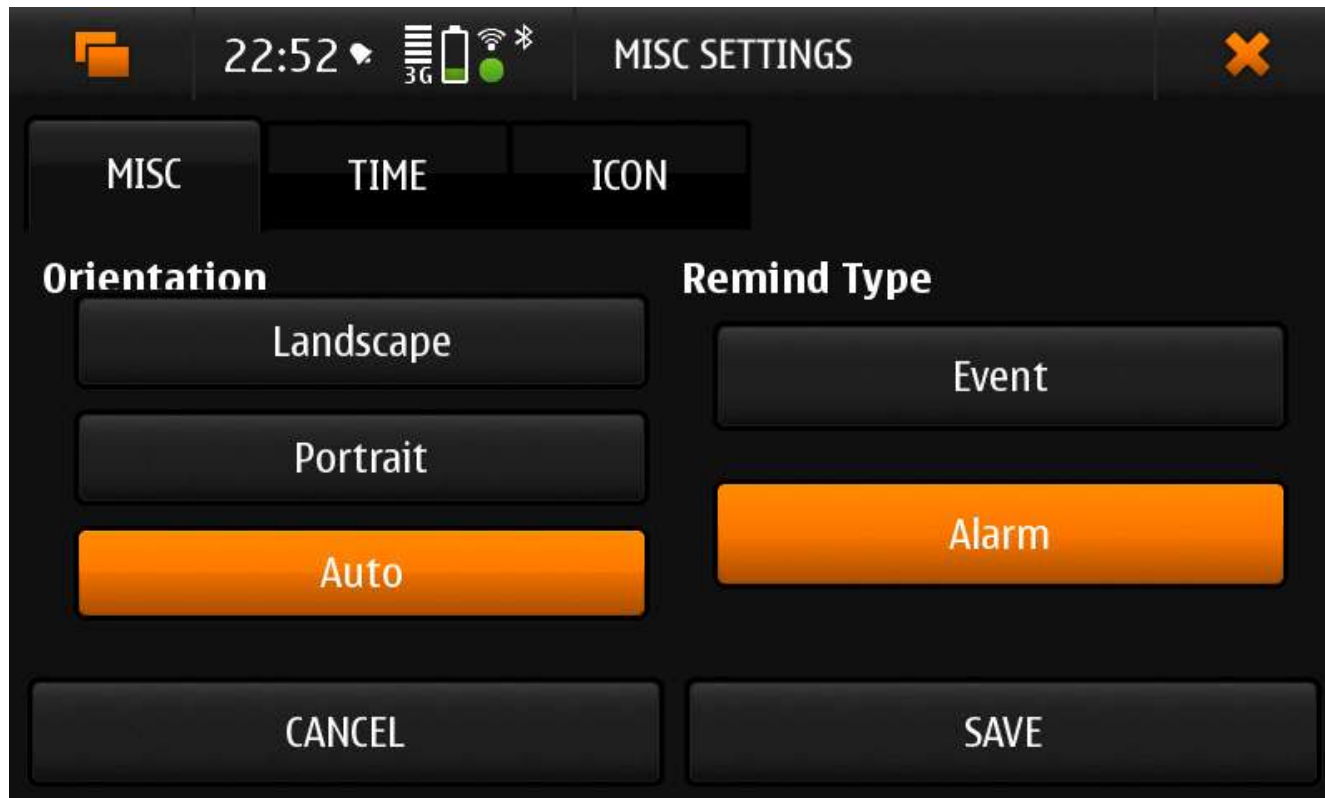
sherlock

FAV CHANNEL LIST CANCEL SAVE

Application Settings (MISC)

Orientation : set your default orientation.

Remind Type : if you want only an event as a reminder in your calendar then select Event , if you want an alarm as well then select Alarm.



Application Settings (TIME)

Past Listings : show/hide programmes in the past.

Prime Time: if you want to view programmes only between a selected time frame.

22:52 3G

MISC SETTINGS

MISC TIME ICON

Past Listings

Show

Hide

Prime Time

start time 00:00

start time 00:00

CANCEL SAVE

Application Settings (ICON)

Select the icon style that you like 😊

