



# SHOWTIME v1.2

for the **NOKIA N900**

Brought to you by [www.passiongarage.co.uk](http://www.passiongarage.co.uk)

Maemo.org id : [krk969](#)

Email : [rkmaemo@gmx.com](mailto:rkmaemo@gmx.com)

# What is this ?

A global TV channel list viewer with calendar reminder integration.

This app downloads xmltv data depending on the region selected and displays the tv channel listings , in most cases for an entire week. The user can then view details of the programme and select them to be added to his calendar.

The app can also send the messages to perform remote recording of selected programmes, but currently this is limited to the UK region but can be added to any region if information about such a service is available.

Special Mention: Thanks to all XMLTV data source providers who have taken the pains to maintain the XMLTV data for their regions.

If you want to generate your own XMLTV data its pretty easy or if you just want to have some general knowledge you could refer to

<http://wiki.xmltv.org/index.php/XMLTVProject>

# Countries/Regions Supported in v1.2

COUNTRY CODE	NAME	DATA FILES
UK	United Kingdom	Single File
AU	Australia	Per Day File
NZ	New Zealand	Per Day File
DE	Germany	Single File
FR	France	Single File
IT	Italy	Single File
ES	Spain	Single File
DK	Denmark	Single File
NL	Netherlands	Single File
NO	Norway	Per Day File
SE	Sweden	Per Day File

# Countries/Regions ( contd...)

COUNTRY CODE	NAME	DATA FILES
FI	Finland	Single File
BE	Belgium	Single File
PL	Poland	Single File
HR	Croatia	Per Day File
SI	Slovenia	Per Day File
MY	Malaysia	Single File
RU	Russia	Single File
ZA	South Africa	Single File

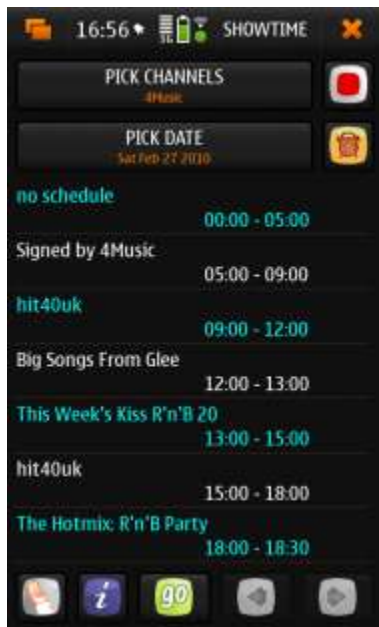
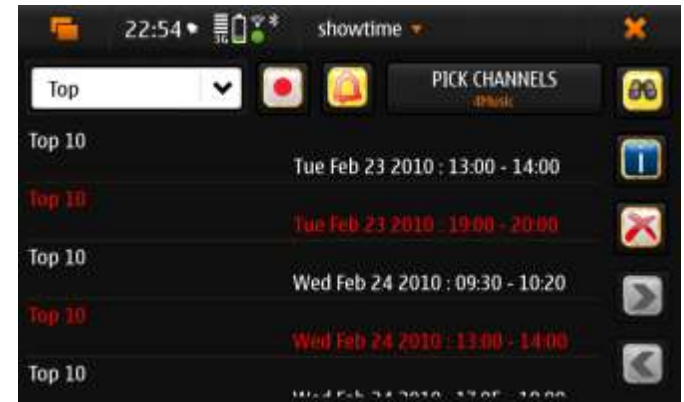
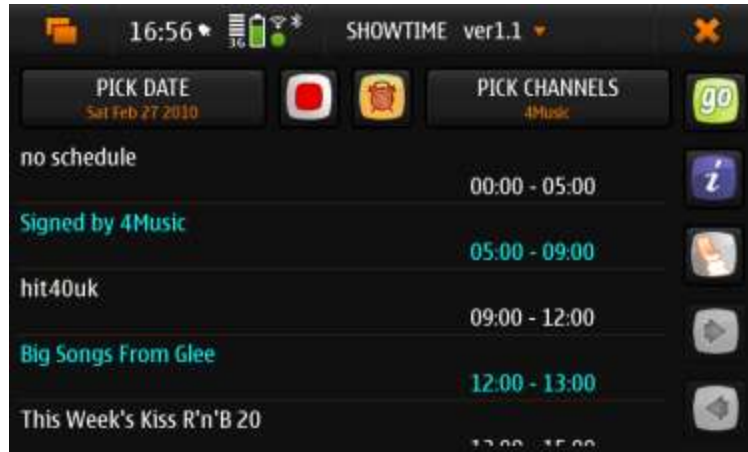
*\*Single File XMLTV files generally have data for about 5-7 days for a channel. This varies of course for channels/regions.*

# Main Highlights

## V1.2 supports

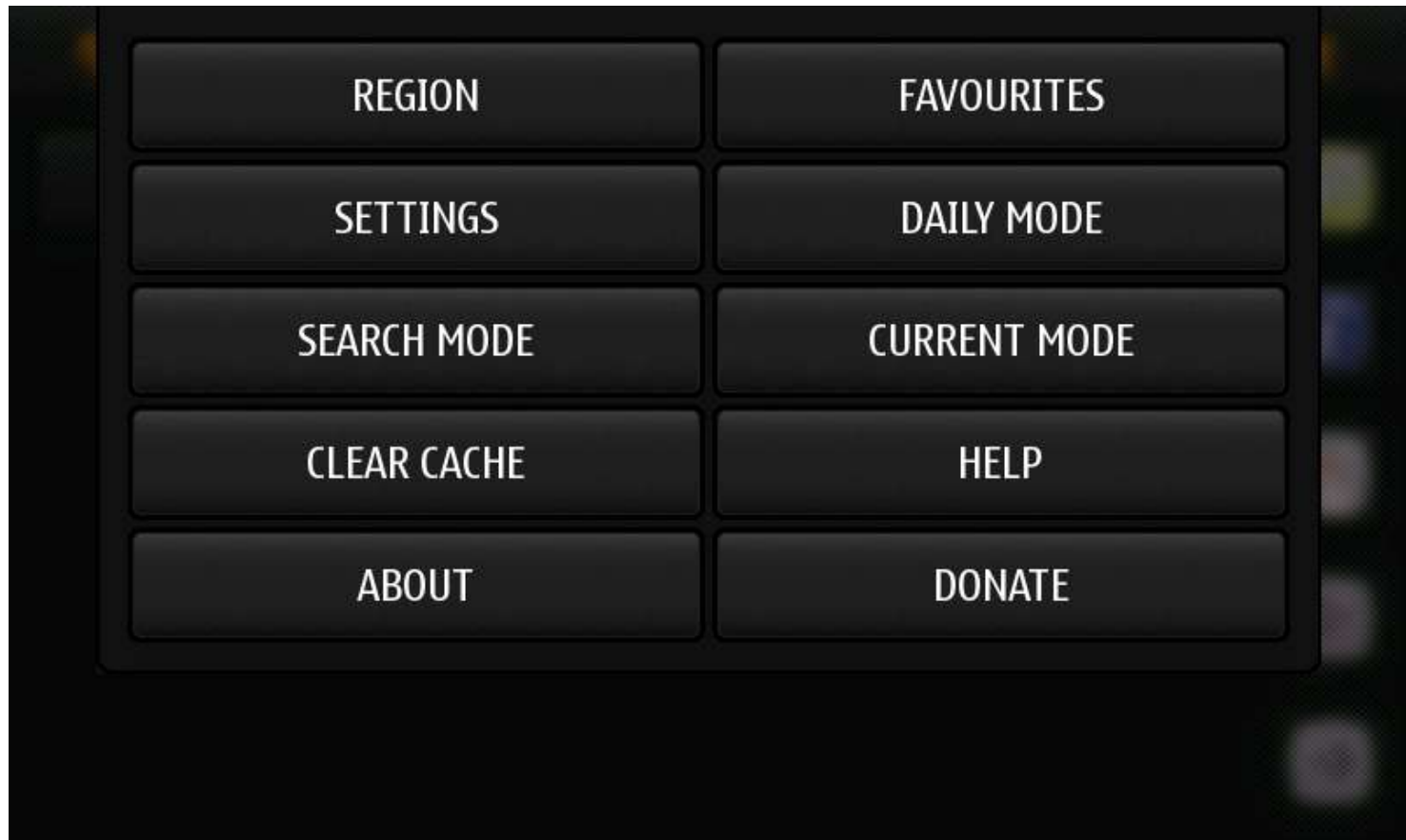
- Switch country/region dynamically
- Set calendar reminders/send remote record\*(UK only) for selected programmes.
- Search for your favourite programmes.
- Save favourite channels/programme titles.
- Show current listings. ( current time +/- 1 hour )
- Portrait mode available.
- Caches downloaded files locally and deletes them when they are a couple of days old.
- All settings are stored locally so its reloaded when app starts.
- If an XMLTV link for any country can be provided, its very trivial to add it to the app.
- Prime time setting.
- Show/Hide past listings.
- Select from 4 different icon sets.

# Random Screenshots



## STEP 1 :

Click on the title to bring up the menu. Then click on REGION to select your region.



## STEP 2 :

Click on region you want to see the data for.



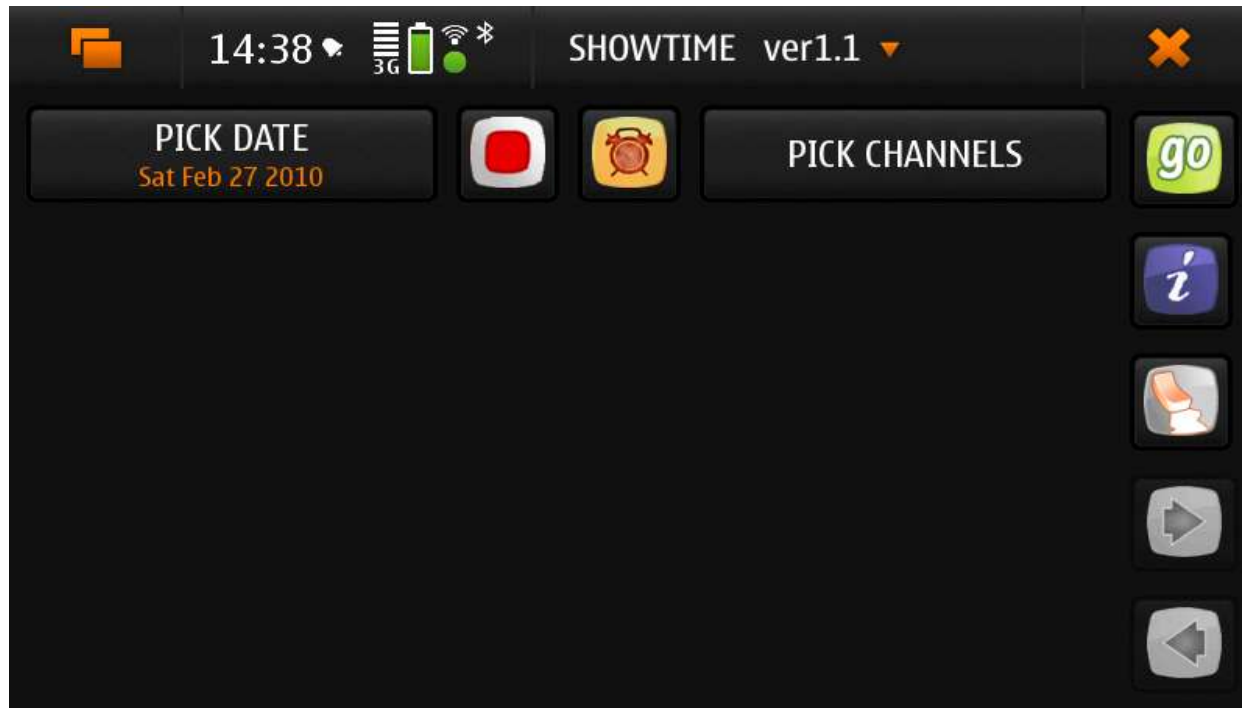


### STEP 3: ( Default = Daily Mode )

Click on the PICK CHANNELS to bring up the channel list. Then click on channel you want.

This will be added to the list of selected channels in memory.

*NOTE::You can select as many channels you want and they will be added to the list of selected channels in memory. But the more you add the more time taken to read/parse/load all of them into the N900 memory ☺. Ive tried with about 25-30 and it seems fast enough, maybe it could take more based on the region(as some regions have more data), there is no restrictions on the number you can select anyways.*



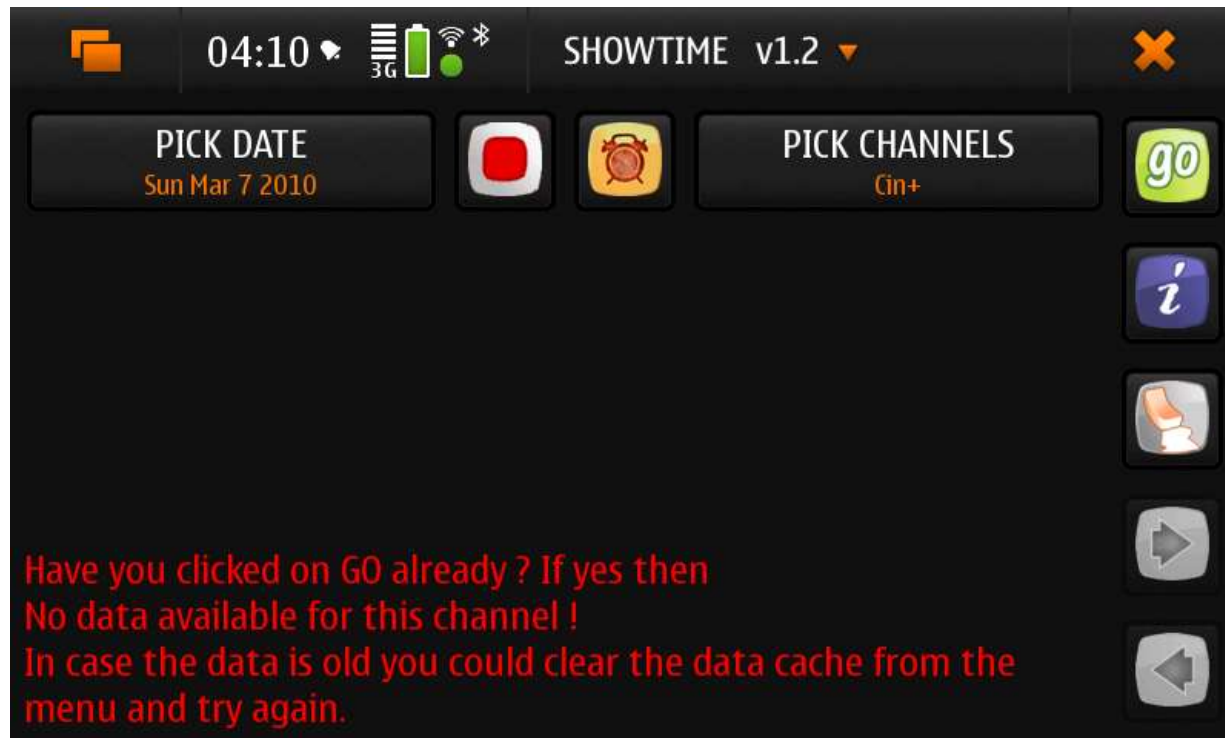
## STEP 4:

Click on the PICK DATE to bring up the date list. Then click on the date you want to see the channel listings for.

*NOTE::All dates will appear in RED as there is no data in memory currently. Once the data is in memory they turn green if the data for the date is present.*

Once you have selected the date hit the **GO** button.

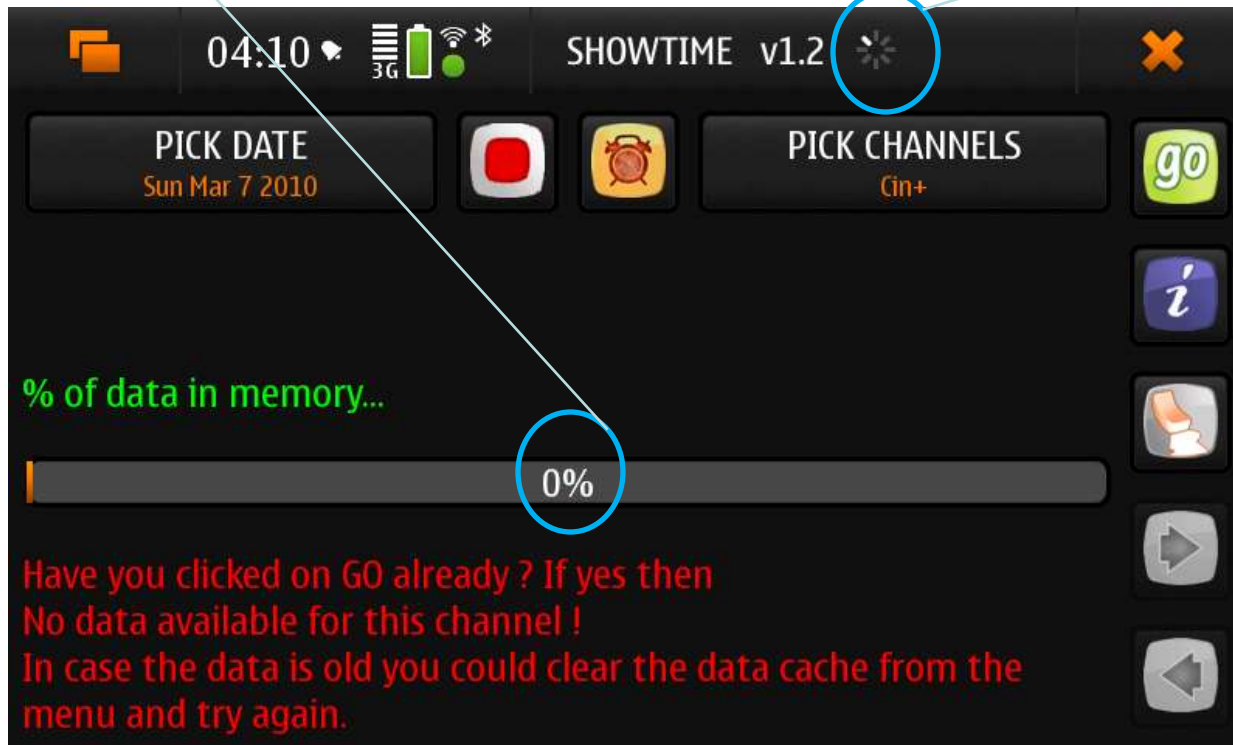
This will download(if data is not present on the phone) and read/parse/load the XMLTV data for all selected channels onto the N900 memory.



## STEP 4a: ( watch progress indicators )

This indicator shows the progress of loading the content of the XMLTV files into the N900 memory.

This indicator shows the app is busy downloading/reading/parsing XMLTV files



## STEP 5a:

If data is present its displayed as a list below.

You can use the arrow buttons to shuttle between your selected channels for the date that is selected.

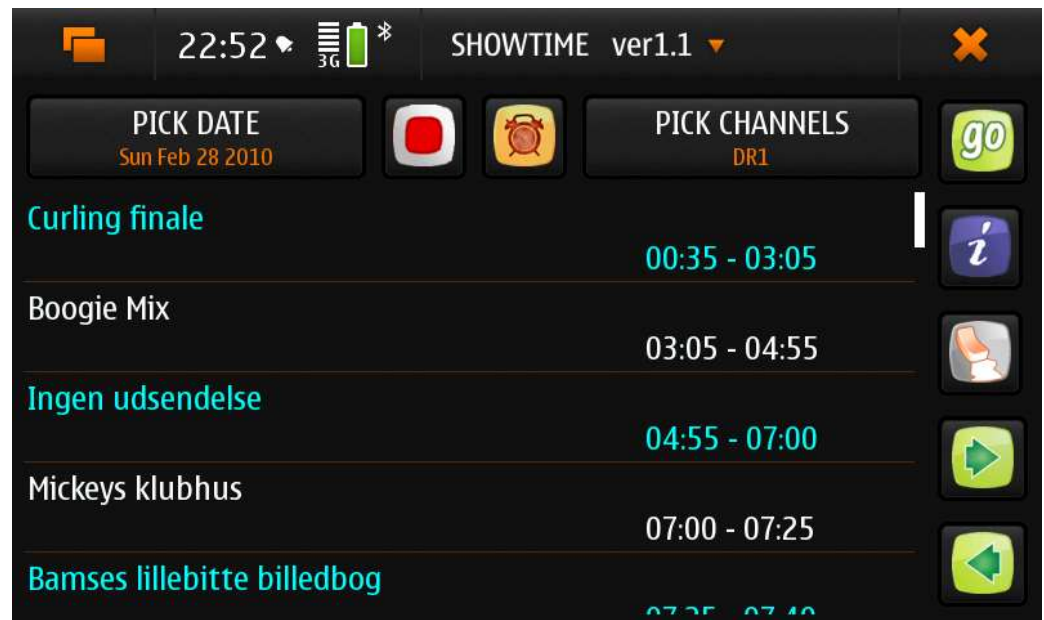
Select the programme(s) you want .

The **info ( i ) button** will show the details of the programme(s).

The **record\* button** will send a message to remote record the programme(s).

The **remind button** adds an event/alarm to your calendar for each programme.

The **clear button** below the info button will clear **all** data in memory.



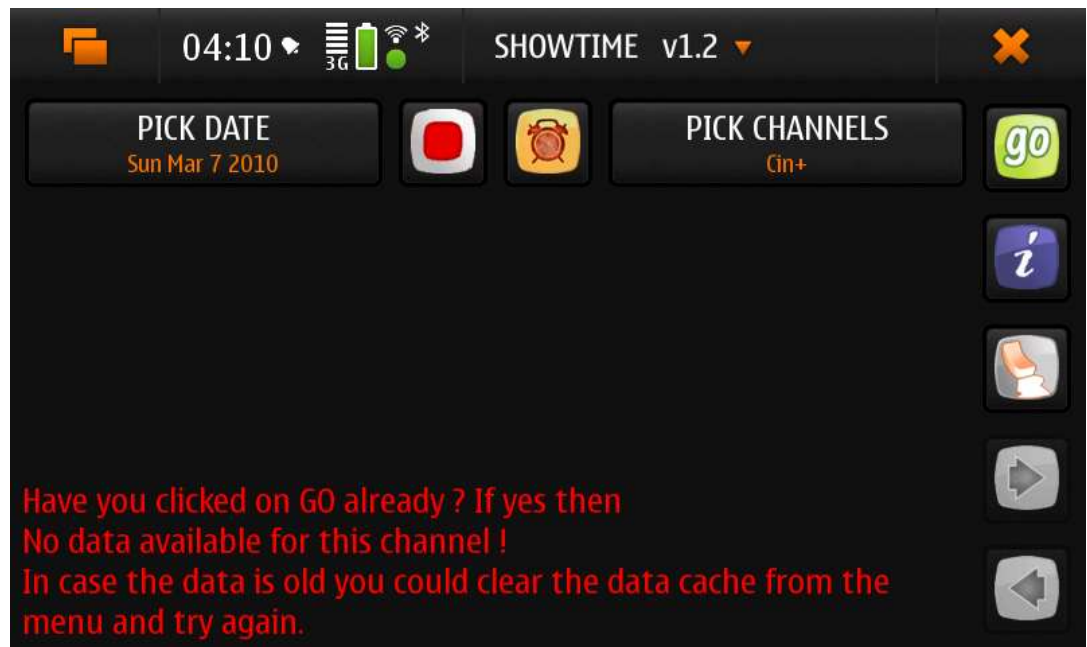
\*remote record will work only in UK as of now. But its trivial to add it for any country if somebody can tell me how it works there.

## STEP 5b:

If data is not present (i.e your source does not have the data ) you see something like this below.

In this case you can either

- Select another channel and hit the go button
- use the arrow button to go to the next selected channel(in case you had selected multiple).
- Click on PICK DATE and see if there are any **green dates**\* for the channel and see the data for that.
- Clear the data cache if its old and try again. Explained in the next slide.



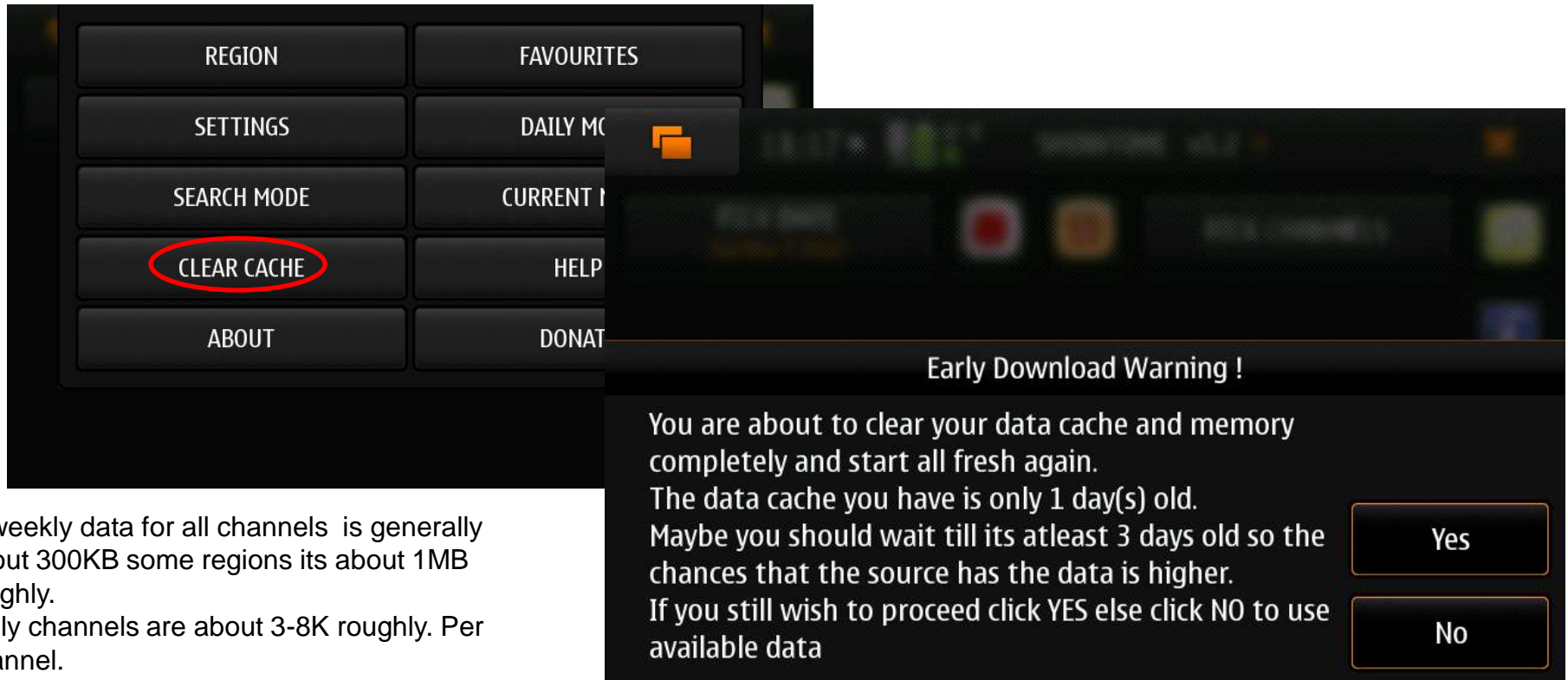
\* Dates get coloured as green if data is available for the channel, else they show up as red.

## STEP 5c: ( clearing the data cache )

If data is not present , as explained in the previous slide, one option is to clear the cache.

When you clear the cache , all your downloaded xmltv files are deleted and it starts fresh for the region.

*NOTE::For some regions data for the week is generated not daily but either weekly or every 5 days so its not wise to delete the cache daily or very soon, so ive put in a general warning below that will pop up, you can override the warning by clicking YES.*



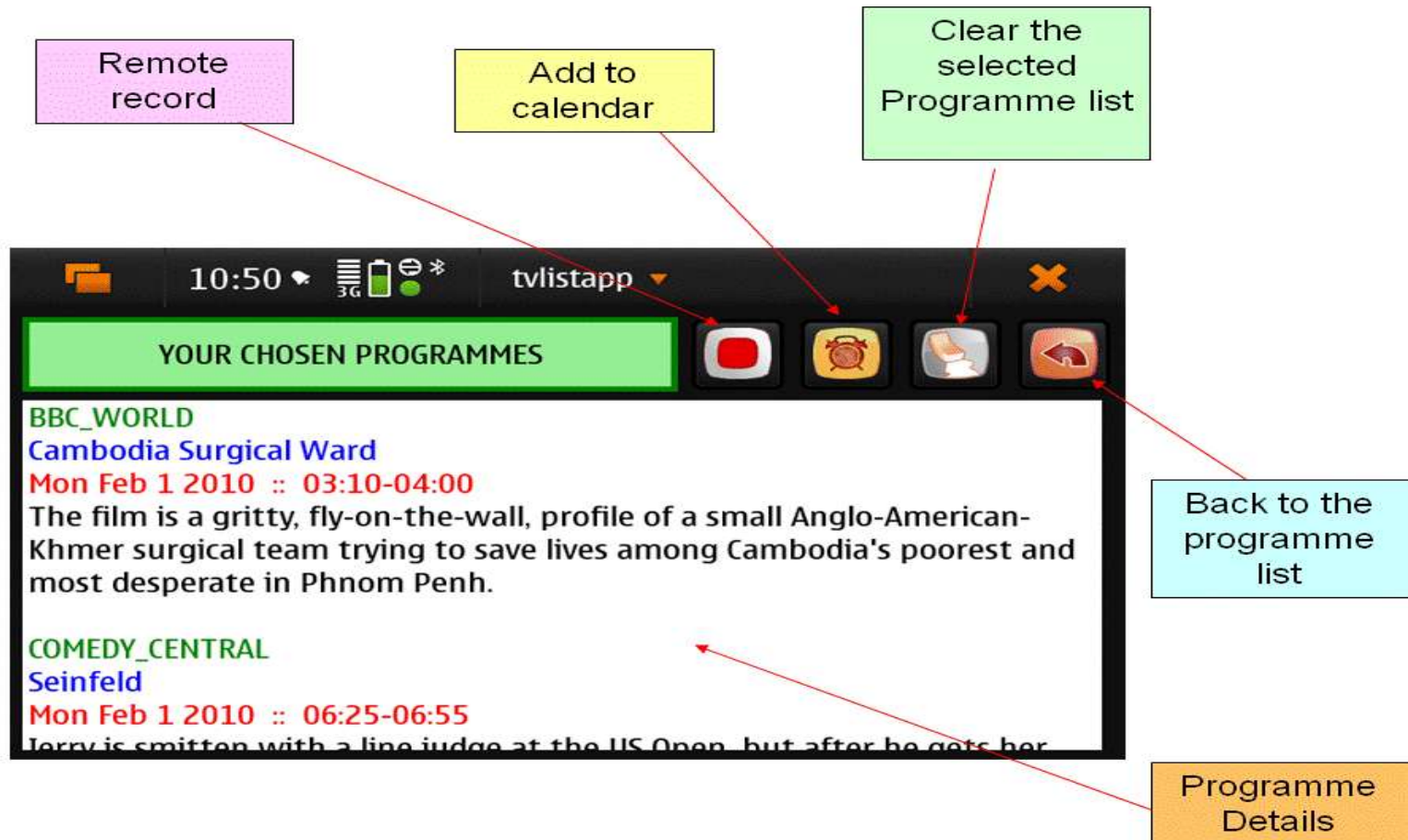
\*\* weekly data for all channels is generally about 300KB some regions its about 1MB roughly.  
Daily channels are about 3-8K roughly. Per channel.  
These are approximate figures.



## Programme Detail Window

You get here by clicking the Info Button (i) on the programme list screen. Here you will see the details of your selected programme.

*NOTE::Hitting the clear Button here will NOT remove your selected channel list, it will only clear the programme list.*

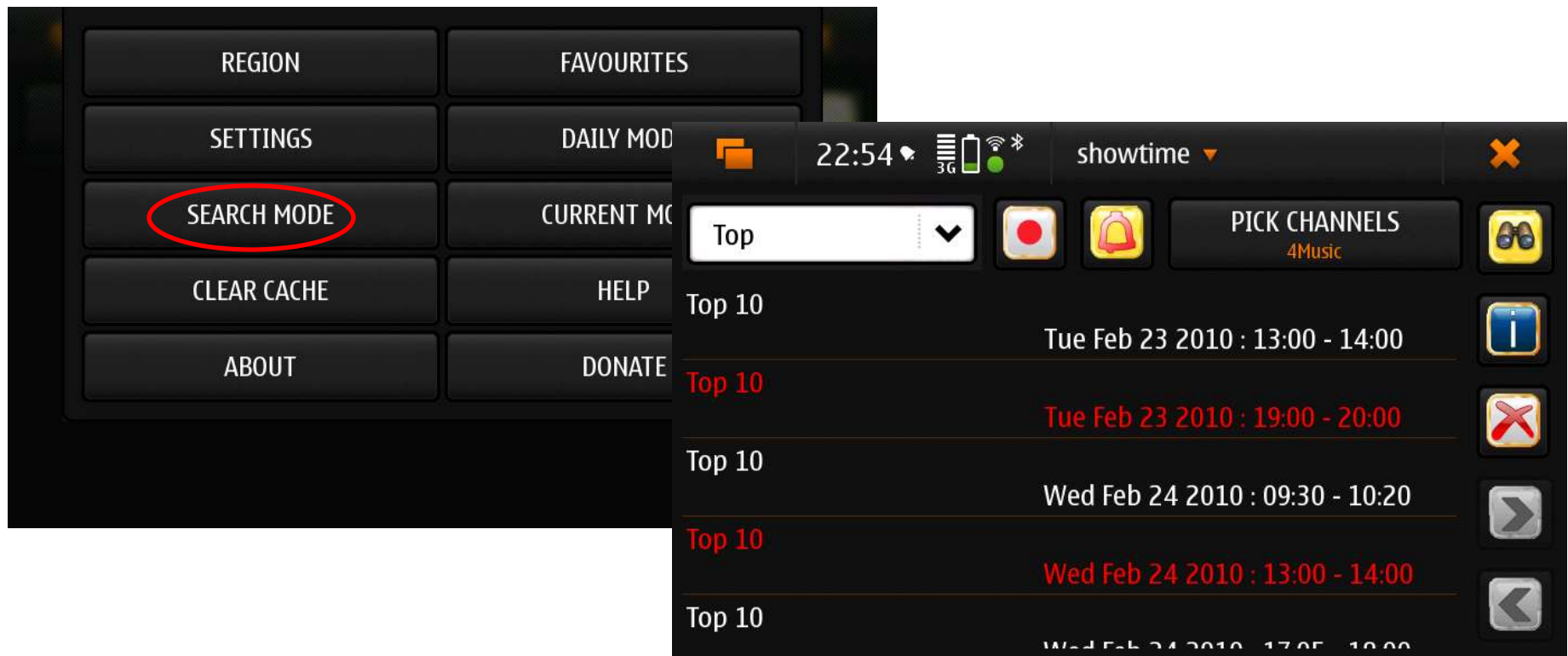


## Search Mode

Click on the title menu, and hit the **SEARCH MODE** button.  
This will search for your favourite programme(s) on the selected channel for the week or until the data is available.

Here you can use the drop down of the input bar to select from your favourite search strings for the channel or enter a new one.

*Note::you can concatenate multiple search strings with a +.  
Just make sure your search string has no + ☺*

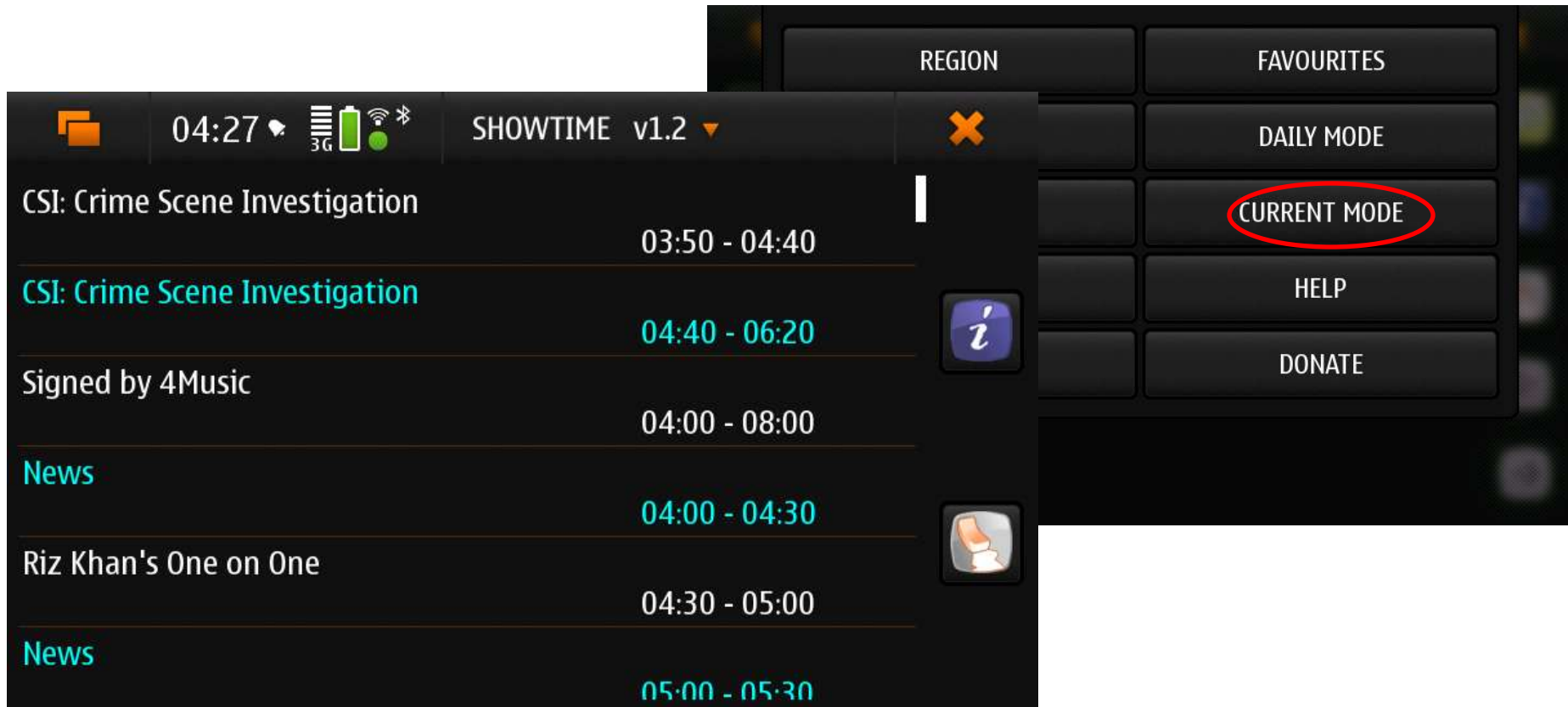




## Current Mode

Click on the title menu, and hit the **CURRENT MODE** button.

This will give you the currently running shows on your selected channels. All programmes which are +/- 1 hour of the current time are displayed.

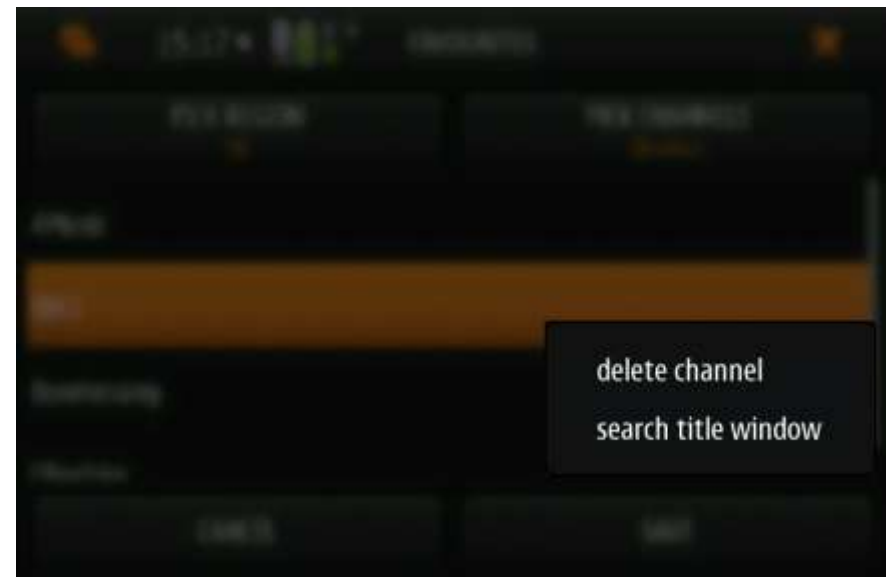


## Favourite Settings

Here you can select your favourite channels for any region by clicking the drop down buttons. By default your selected region is shown.

If you click on any existing favourite channel it will bring up the context menu as shown in the second screenshot.

Search title window will take you to a new window where you can set your favourite search strings for that channel.



## Favourite Search Titles

In the input box type any search string you want and press enter.  
This will be added to the list of favourite search strings for the selected channel.

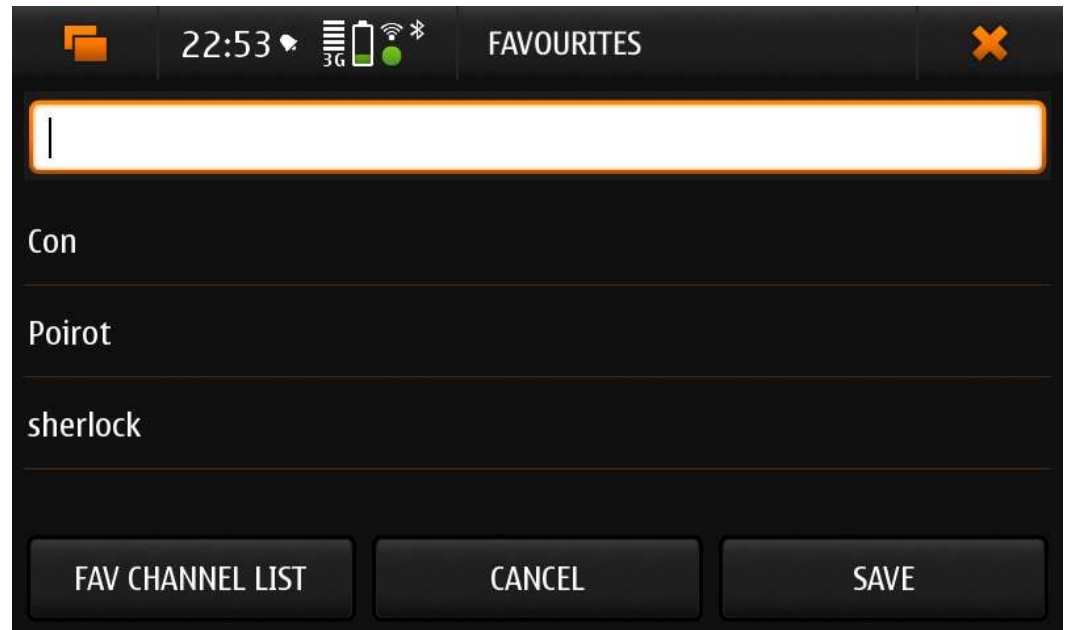
You can use the '+' with a space to concatenate multiple search strings.

Example: Top + Hits

This will search for either Top or Hits.

*Note::search strings are not case sensitive and avoid using + in your search*

😊, its used only to concatenate



FAVOURITES

Con

Poirot

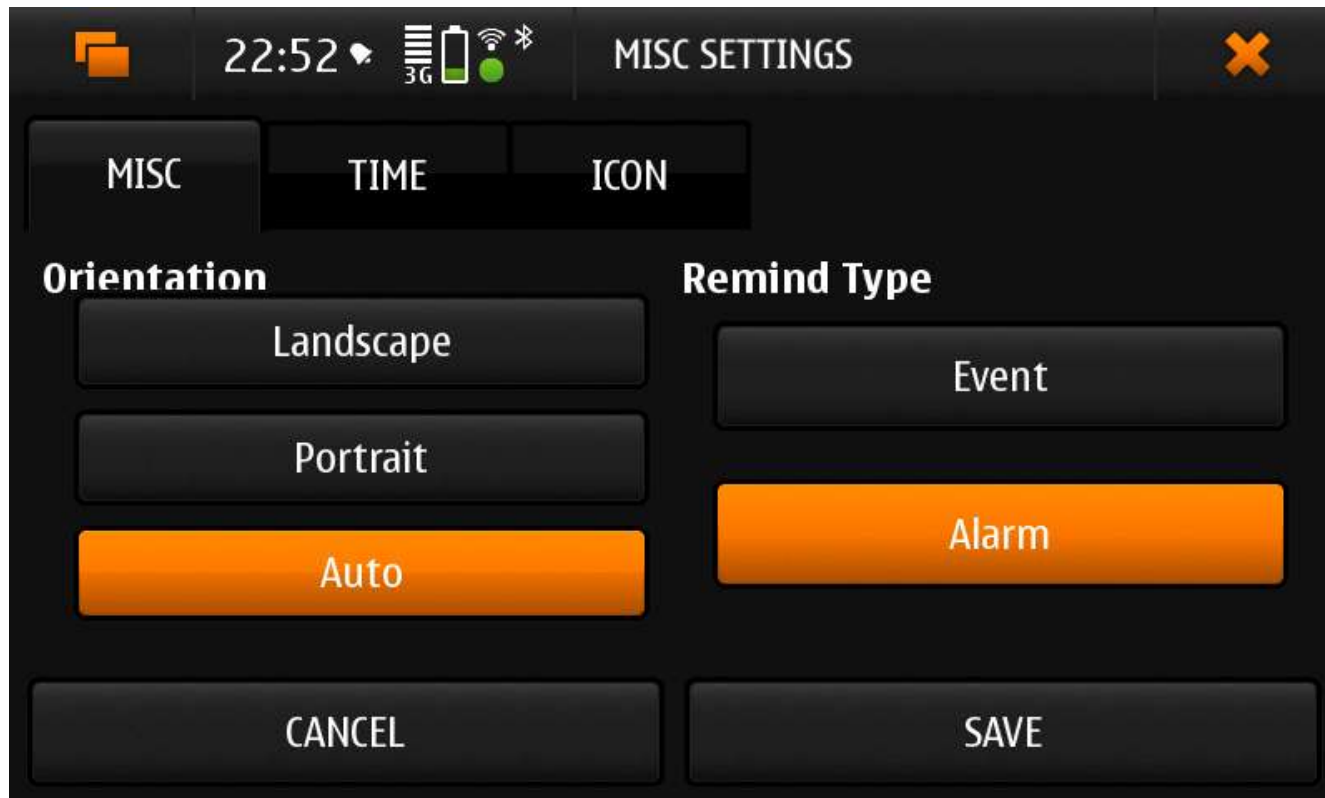
sherlock

FAV CHANNEL LIST CANCEL SAVE

## Application Settings ( MISC )

**Orientation** : set your default orientation.

**Remind Type** : if you want only an event as a reminder in your calendar then select Event , if you want an alarm as well then select Alarm.



## Application Settings ( TIME )

**Past Listings** : show/hide programmes in the past.

**Prime Time**: if you want to view programmes only between a selected time frame.

**MISC SETTINGS**

**MISC** **TIME** **ICON**

**Past Listings**

**Show**

**Hide**

**Prime Time**

**start time**  
00:00

**end time**  
23:59

**CANCEL** **SAVE**

## Application Settings ( ICON )

Select the icon style that you like 😊

